

Love and Learn in the Footsteps of Christ

NEWSLETTER

12TH JANUARY 2024

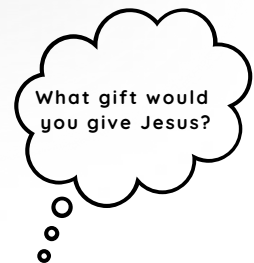
Upcoming Key Dates



A message from the Head

Dear Parents and Carers,
Welcome back, I hope you all had a wonderful Christmas. We've had a great start to the new year as the children have been working 'their socks off'. I would like to take this opportunity to thank you all for your thoughtful Christmas gifts.

Linda Payne



February	Lent
Thursday 1st February	Parents' Forum at 5pm
Tuesday 6th February	Safer Internet Day
Tuesday 14th February	Parents Consultations (New date)
Wednesday 14th February	Parents Consultations (New date)
Wednesday 14th February	Ash Wednesday Mass in Church at 9.15a.m.
Friday 16th February	End of Term
19th - 23rd February	Half Term Holiday

More dates at the end of this newsletter.

Feast of the Epiphany

We started our Epiphany celebrations with a liturgy in school led by the Class Apostles. We continued our celebrations by completing a variety of activities including making beautiful crowns.



Thought of the Week

The children have been learning about the Epiphany and have been thinking about what gifts they could give Jesus. Epiphany is a special time when we think about Jesus and the gifts brought to him by the Magi. We encourage the children to think about the meaning of this significant event and consider what gifts they can offer to Jesus in their own lives. This helps children develop a deeper understanding of the Epiphany and its significance in their faith.



Love and Learn in the Footsteps of Christ

Spotlight on RE

This week, we have been learning about the Feast of the Epiphany.

Class	RE
Foundation 1	Retelling the Epiphany Story through role-play.
Foundation 2	Listening to the story of the Three Wise Men and making crowns.
Year 1	Retelling the Epiphany Story. Making crowns.
Year 2	Retelling the Epiphany Story using key words e.g. Jesus Epiphany, Magi, Persia, star, Gold, Frankincense, Myrrh Making crowns.
Year 3	Epiphany Poster and fact files using evidence from scriptures.
Year 4	Retelling the Epiphany story from the Wise Men's point of view.
Year 5	Describing and explaining the Feast of the Epiphany from the Gospel of Matthew.
Year 6	Describing and explaining the Feast of the Epiphany and why we celebrate it.



Love and Learn in the Footsteps of Christ

Spotlight on English

This week, we have been focusing on improving the children's handwriting. The children have been working very hard and their hard work is making a difference. Well done, children.

Class	English: Handwriting
Foundation 1	Learning the first three stages mark – making. (horizontal and vertical lines).
Foundation 2	Learning all nine stages of mark marking. (horizontal, vertical lines, circles, zig-zags, swirls).
Year 1	Revisiting the ladder family e.g. l, l, t, j, u, y.
Year 2	Learning straight-line capitals letters. e.g. L, T, E, I, F, H.
Year 3	Learning the first diagonal joining patterns e.g. ar, an, am.
Year 4	Learning the diagonal joining patterns e.g. l, u, Joins to r, n, m, l, u.
Year 5	Learning the joining patterns e.g. cr, kn, em, ki, mu.
Year 6	Joining a, c o and letters ulk, air, ell.

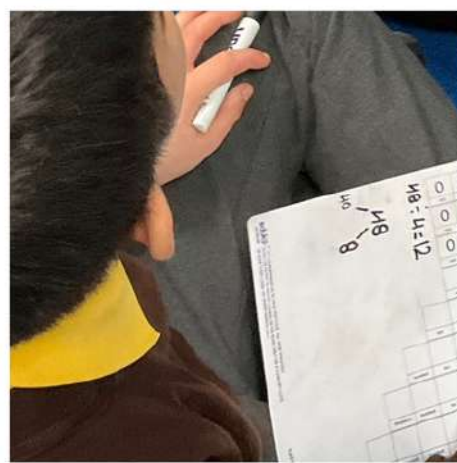


Love and Learn in the Footsteps of Christ

Spotlight on Mathematics

In mathematics this week, the children have been learning about the four operations: addition, subtraction, multiplication and division. Year 5 have been learning about line graphs.

Class	Mathematics
Foundation 1	Number bonds to 5.
Foundation 2	Number bonds to 10.
Year 1	Subtraction to 20. Using the words more and less.
Year 2	Multiplication- making groups of 2, 5 and 10.
Year 3	Dividing 2 Digit numbers using the bus stop method.
Year 4	Multiplying 3 digit with 2 digit numbers. Recapping division.
Year 5	Reading line graph and answering questions.
Year 6	Division word problems.



St Joseph's Church

Services

The Weekend Mass times at the church are as follows:

- Saturday 6 p.m.
- Sundays 8.30a.m. & 10.30a.m.

St Joseph's Church Parish Newsletter

Copies of the Parish Newsletter can be found here.

<https://parish.rcdow.org.uk/carpenderspark/newsletters/>

RE Newsletter

Please click on the link below to read the December RE Newsletter:

<https://www.tentenresources.co.uk/prayers-for-home/parent-newsletter/>

Pray at Home

If you have missed our Pray at Home newsletter, please click on the link below:

<https://stjosephs775.herts.sch.uk/statutory-information/faith-at-home>

School Admissions

Attention Foundation 1 parents and those seeking a school place for their child in September 2024 Applications for admission to our school are now open. If your child was born between September 1st, 2019, and August 31st, 2020, you will need to apply for a school place.

Please complete the Hertfordshire online form at: (<https://www.hertfordshire.gov.uk/services/schools-and-education/school-admissions/primary-junior-and-middle-schools/primary-junior-and-middle-school-places.aspx>)

You will also need to complete the School's Supplementary form.

Nursery Admissions

We are pleased to announce that we now offer full-time Nursery provision from 9 a.m. to 3 p.m. If you are interested in enrolling your child in our Nursery Class, please take note of the following information. Applications for admission to our Nursery are now open to children born between the 1st of September 2020 and the 31st of August 2021.

To apply, it is essential that you complete the School's Supplementary Form, which can be obtained from our school's website or the School Office. In order to complete the application process, we kindly request the following documents:

1. Supplementary Information Form
2. Baptism Certificate (if applicable)

We appreciate your cooperation in providing the necessary documentation for the application process. Therefore, please ensure that all forms are fully filled out and returned to the School Office. Should you have any further questions or require additional information, please do not hesitate to contact Mrs Tannian.

Wednesday Word

- The Primary School Wednesday Word is an online resource that allows you to reflect on the weekly Gospel.
- To view the most recent Wednesday Word please click on the link below:
- [Wednesday Word](#) Experience and share God's word through our gift to you each week

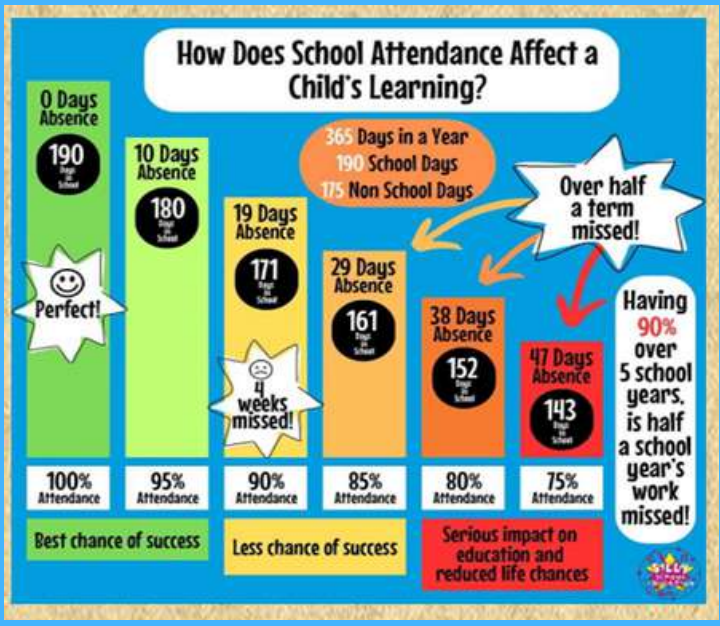


Attendance

Year 4 had the best attendance this week. Well done, Year 4.

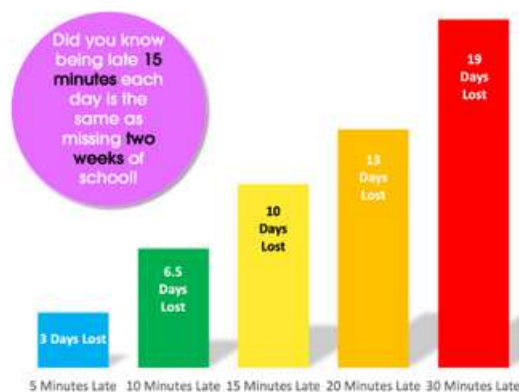
Regular attendance is crucial for your child's academic progress and social and emotional development. It also has a detrimental impact on your child's play development. For example, during the third stage of play development, a child will play with only one friend. If a child is frequently absent from school, the child's 'one friend' will find another more reliable friend. Research suggests that a child has poor attendance, will often struggle to form solid friendships because they are an unreliable friend.

Currently, our whole school attendance is 94.9%. In December, we were 96.6%. Please help us improve our attendance by sending your children to school. Thank you. All term time holidays are unauthorised.



Punctuality Matters!

Lost Minutes = Lost Learning



Parent Mental Health

Day

Mental Health Day 2024 is an opportunity for parents and carers to acknowledge and discuss their struggles and share in their achievements of connecting positively with each other and the whole family, and to learn ways to connect positively to maximise young people's mental health.

You can find more information about this on the link below:

<https://stem4.org.uk/parentmentalhealthday/>

Prayer of the Week

Dear God,

Thank you for always listening to us in our prayers. Please help us to make the right choices and use our gifts wisely and follow your path.

You always forgive us and love us and we are very grateful for that.

Amen.

By Lily



Term Dates

February	Lent
Thursday 1st February	Parents' Forum at 5pm
Tuesday 6th February	Safer Internet Day
Tuesday 14th February	Parents Consultations (New date)
Wednesday 14th February	Parents Consultations (New date)
Wednesday 14th February	Ash Wednesday Mass in Church at 9.15a.m.
Friday 16th February	End of Term
19th - 23rd February	Half Term Holiday

March	Lent
Friday 1 st March	St David's Non-Uniform Day (Children may wear green, red, white or yellow).
Thursday 7 th March	World Book Day – Book Character Non Uniform day. All parents are welcome to attend the World Book Day Assembly This is a non-uniform day. Children may dress up as their favourite book character.
Friday 8 th March	Mother's Day Assembly starts at 9.00a.m. All F1 – F2 mothers/carers welcome to attend. More information to follow.
Friday 15 th March	St Patrick's Non-Uniform Day (Children may wear green or white).
Tuesday 19 th March	St Joseph's Day Mass – 9.15am in Church All parents welcome to attend
Monday 25 th March	Holy Week Liturgies Lenten Cake Competition (all children may enter by baking a cake). Cake sale.
Tuesday 26 th March	Lenten Toy Sale (please donate old toys).
Thursday 28th March	Easter Bonnet Parade (F1 – Y6 classes) (F1-Y6) All parents welcome to attend the Easter Bonnet Parade. Children to make the bonnets at home and bring them into school. All children may participate in this event. End of term. School closes at 1.30p.m.

Love and Learn in the Footsteps of Christ

Term Dates continued...

April	Eastertide
Monday 15th April	Start of Term
Tuesday 23 rd April	St George's Non-Uniform Day (Children may wear red, white or blue).

May	Month of Mary
Monday 6th May	Bank Holiday. School closed.
Thursday 9 th May	Ascension Mass at 9.15am in church All parents welcome to attend
Friday 10 th May	Parents' Forum at 9.45a.m.
1 st – 24 th May	KS1- Year 2 Assessment
Monday 13th – 16th May	KS2 SATs – Year 6 Tests (free breakfast club for Year 6 pupils all week, starting at 8.00a.m.)
Monday 13th May	KS 2 Spelling, punctuation and Grammar Paper 1 & 2 tests
Tuesday 14th May	KS2 Reading Test
Wednesday 15th May	KS2 Maths Paper 1 & 2 Test
Thursday 16th May	KS2 Maths Paper 3 Test
Thursday 16 th May	Year 5 Secondary School Transfer Meeting at 2.30p.m. (All Year 5 parents are welcome to attend)
Monday 20 th May	Walk to School Week
Tuesday 21 st May	KS2 Sports Day at 9.30a.m. KS2 parents may attend
Tuesday 21 st May	KS1 Sports Day at 1.20p.m. KS1 parents may attend
Friday 24 th May	End of term. School closes at 3.15p.m.
27 th May – 31 st May	Half Term Holiday – School Closed

June	
Monday 3rd June	Inset Day – school closed.
Tuesday 4th June	Start of Term
Tuesday 4 th June	Year 1 Phonic tests commence Year 4 Multiplication tests commence
Wednesday 12 th June	Class Photographs
Tuesday 18 th June	KS2 Reserve Sports Day at 9.30p.m. KS2 parents may attend.
Tuesday 18 th June	KS1 Reserve Sports Day at 1.15p.m. KS1 parents may attend.
Tuesday 25 th June	Foundation Stage Sports Day at 9.30a.m. F1 & F2 parents welcome to attend.
Tuesday 25 th – 28 th June	Year 6 Trip to Bournemouth
Friday 28th June	St Peter and St Paul Mass in school TBC

July	
Monday 1 st July	F1 new children and parents visits 1.30p.m.
Tuesday 2 nd July	Reserve date: Foundation Stage Sports Day at 9.30a.m. F1 & F2 parents welcome to attend.
Tuesday 2 nd July	Year 2 to Year 3 Transition Meeting at 2.30p.m. (All Year 2 parents are welcome to attend)
Wednesday 3 rd July	New to Year 2 Transition Meeting at 2.30pm (All Year 1 parents are welcome to attend)

Love and Learn in the Footsteps of Christ

Term Dates continued...

Thursday 4 th July	New to Year 1 Transition Meeting at 2.30pm (All Foundation 2 parents are welcome to attend)
Monday 8 th July	F1 new children and parents meeting 1.30p.m.
Thursday 11 th July	Transition Day for all pupils Secondary School Transition day New to F2 Parents' Meeting at 9.15a.m. (Current F1 parents to attend).
Friday 12 th July	Year 6 Leavers' Mass in school at 11.00a.m. Whole School Picnic starting at 12.30p.m. (weather permitting)
Tuesday 16 th July	KS2 Dress Rehearsal at 9.30 a.m. KS2 parents and toddlers are welcome to attend.
Wednesday 17 th July	KS2 Play at 6.00p.m. KS2 parents are welcome to attend. Year 3,4,5 and 6 pupils must be back in school at 5.40pm
Friday 19 th July	Leavers' Assembly at 9.00 a.m. (F1 – Y6) All parents are welcome to attend the Mass End of Term Year 6 lunch End of term. School closes at 1.30p.m.